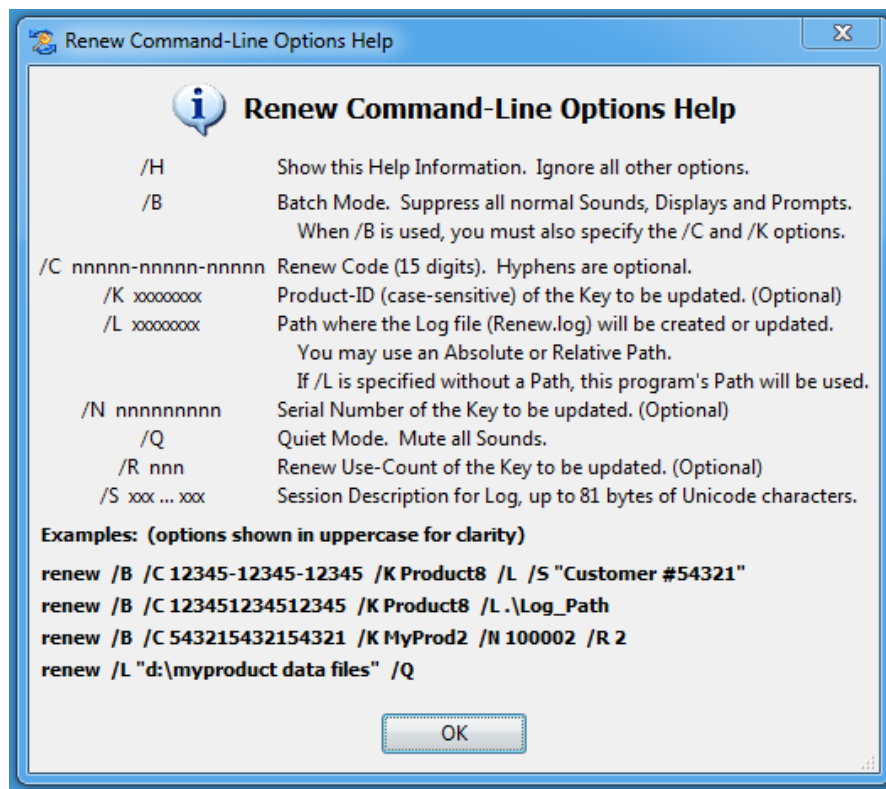


Renew Command-Line Options Overview

Renew supports “**Command-Line Options**” which allow the entire **Renew** operation to be automated and recorded. By using the “**/B**” option to run **Renew** in “**Batch Mode**”, a parent program or batch file can enter the Renew Code and check for the success of the **Renew** operation. Batch Mode completely suppress all normal Sounds, Displays and Prompts. However, all program activity can still be recorded to a Log file for later review.

The Log file created by **Renew** is normally called “**Renew.log**”. If the **Renew.exe** program has been renamed, the Log file will use the new name used. Each Logged activity is stamped with the local Date and Time so you have a record of exactly what was done and when it was done.

When running **Renew** in Batch Mode, the parent program or batch file can check to determine if the **Renew** operation completed successfully. If running from a Windows Batch file, you would check ERRORLEVEL. If running from a parent program, you would check the completion code of the executed program (**Renew**). If the value is set to zero (0), the operation completed successfully. If not zero, then the value is set to the last three (3) digits of the Error Code. For example, if **Renew** failed with Error 6043 because no Keys were found, then the value would be set to 43. If **Renew** failed with Error 6075 because the Renew Code was invalid, the value will be set to 75. If you specify an unsupported Command-Line option, the value will be set to 9.



Renew Command-Line Options Help Screen

Renew Command-Line Options Details

The following table shows all the command-line options for **Renew.exe**. All options can be in lowercase or uppercase. Uppercase is show for clarity.

/H	Display Help . This option displays all command-line options and examples showing how to use them. When this option is specified, all other command-line options are ignored.
/B	Batch Mode . This option tells Renew to run without Sounds, Displays or User I/P Prompts. If you wish to record all program activity to the Log file, then specify the /L option. Batch Mode is normally used to hide the Renew operation from the End User. When using Batch Mode , you must also provide a Renew Code and Product-ID via the /C and /K options.
/C nnnnnn-nnnnnn-nnnnn	Renew Code (15 digits). Hyphens are optional. If you have specified " /B " for Batch Mode , this Command-Line Option is required.
/K xxxxxxxx	In case there is more than 1 Key plugged into the computer, this option allows you to specify the Product-ID (xxxxxxx) of the Key which will be renewed. This field is case-sensitive and supports Unicode characters. The Product-ID specified here should exactly match what was used to build the Key. If you have specified " /B " for Batch Mode , this Command-Line Option is required.
/L xxxxxxxx	When this option is used, Renew records all program activity to a Log file. The /L option allows you to specify the Path (xxxxxxx) where the Log file will be created or updated. If the Path specified already contains a Log file, the new information will be appended to the end of the file. The name of the Log file will always be the current name of the Renew program with an extension of ".log". For example, if you have renamed the program to " Reset.exe ", the Log file name will be " Reset.log ". You may specify an Absolute Path or Relative Path. A Relative Path will be based on the current Path of the Renew program. If using a Path with embedded spaces, you must use double-quotes around the Path and not end the Path with a "\". If the /L option is specified without a Path, the Path of the Renew program will be used.
/N nnnnnnnnnn	In case there is more than 1 Key plugged into the computer, this option allows you to specify the Serial Number of the Key which will be renewed. If you don't specify this option, the first Key found that matches all the other options will be used.
/Q	Quiet Mode . Mute all Sounds.
/R nnn	In case there is more than 1 Key plugged into the computer, this option allows you to specify the Renew Used-Count (0-250) of the Key which will be renewed. If you don't specify this option, the first Key found that matches all the other options will be used.
/S xxx ... xxx	Session-ID up to 81 bytes of Unicode characters. Used to quickly identify this work Session in the Renew Log file.
Examples of Renew Command-Line Options	(Command-Line Options shown in uppercase for clarity) renew /B /C 12345-12345-12345 /K Product8 /L /S "Customer #54321" renew /B /C 123451234512345 /K Product8 /L .\Log_Path renew /B /C 54321-54321-54321 /K MyProd2 /N 100002 /R 2 renew /L "d:\myproduct data files" /Q